

2MP/8MP BULLET CAMERA

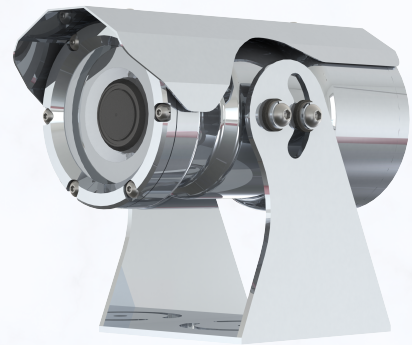
Stainless Steel 316L **Ex-Proof** 2MP/8MP Bullet Camera



GC-XBN SERIES

Key Features

- AISI 316L Electro Polished Stainless Steel
- 2MP / 8MP H.265 Network Camera
- Various Lens Options (Fixed / MVF)
- Shock and Vibration Tested
- Tempered Glass
- 12VDC / POE
- IP68
- -40°C~60°C



GC-XBN

PRODUCT SPECIFICATIONS

GC-XBN Series

Camera

- **Image sensor**
1/2.8" Sony STARVIS CMOS
- **Scanning mode**
Progressive scan
- **Lens**
2M Fixed [GC-XBN-2F]
: Fixed 2.8mm±5%, F2.0
2M MVF [GC-XBN-2M]
: MVF 2.7-12mm±5%, F1.6
8M MVF [GC-XBN-8M]
: MVF 3.2-10.5mm±5%, F1.6
- **Digital zoom**
8x
- **Angle of view**
2M Fixed [GC-XBN-2F]
-. H: 113.7° / V: 61.5°
2M MVF [GC-XBN-2M]
-. H: 108.8°-32.3° / V: 57.2°-18.2°
8M MVF [GC-XBN-8M]
-. H: 108.1°-30.3° / V: 56.3°-17.1°
- **Shutter speed**
Automatic / Manual
1/30,000sec- 1/30sec
- **Day/night**
ICR(auto/day/night)
- **Min. illumination**
Color: 0.03Lux, B/W: 0.01Lux
- **Camera setting**
DOL HDR, DNR, BLC, HLC,
White balance, Exposure
control, Mirror, Flip, Privacy
masking, Corridor format, LDC,
OSD
- **Analytics**
Tamper, Video motion detection

Video

- **Compression**
H.265(Main profile), H.264(High,
Main, Base line profile), MJPEG
- **Resolution**
2M [GC-XBN-2F/ GC-XBN-2M]
1920x1080, 1280x720, 1024x576,
768x432, 704x392, 640x360,
384x216
8M [GC-XBN-8M]
3840x2160, 1920x1080,
1280x720, 1024x576, 768x432,
704x392, 640x360, 384X216
- **Frame rate**
2MP : Max. 30(25)fps@1920x1080
8MP : Max. 30(25)fps@3840x2160
- **Streaming**
Simultaneously H.265, H.264 and
MJPEG (Triple streaming)
Independent Frame Rate and
Bandwidth Control, VBR/CBR

Network

- **Security**
Multi User Authority, IP Filtering,
HTTPS
- **Protocol**
TCP/IP, UDP, IPv4/v6, HTTP,
HTTPS, FTP, UPnP, RTP, RTSP,
RTCP, DHCP, ARP, Zeroconf
- **API**
Open API, ONVIF profile S, T

MAIN CERTS

ATEX

ATEX (EN 60079-0: 2017 , EN 60079-1:
2014, EN 60079-31: 2013):
II 2 G Ex d IIC T6 Gb Ta -40°C to +60°C
II 2 D Ex tb IIIC T85°C Db Ta -40°C to
+60°C

IECEX

IECEX (IEC 60079-0: 2017 , IEC 60079-
1: 2014, IEC 60079-31: 2013):
I Ex d IIC T6 Gb Ta -40°C to +60°C
IEx tb IIIC T85°C Db Ta -40°C to +60°C

Certified by DeKRA

5 G OSS

General

- **Connectors**

One conduit entry

Ethernet RJ-45

Power 2pin terminal block

- **Power supply**

12VDC / POE

- **Power consumption**

Approx. 5W

- **Operating humidity**

0-90% RH(Non-condensing)

- **Operating temperature**

-40°C - +60°C

- **Ingress protection**

IP68

- **Dimension**

94(W)x146(H)x200(D)mm

- **Weight**

Approx. 4Kg

- **Certification**

ATEX, IECEx, KCs

Model Reference

GC-XBN-2F : 2MP, Fixed focal lens

GC-XBN-2M : 2MP, 2.7-12mm Motorized vari-focal lens

GC-XBN-8M : 8MP, 3.2-10.5mm Motorized vari-focal lens